

# THE ROTAC® SCOOP

BY MICROMATIC

- **LIFTS 800 LBS AT 3000 PSI**

*Industry leading 27,000 in/lbs torque at 3000 psi*

- **SLIM PROFILE DESIGN**

*Tipper tucks away to accommodate kick-bar setups for dual commercial & residential routes*

- **CART ENGAGEMENT**

*Scooping motion of cart tipper ensures consistent cart engagement on un-even terrain*

- **CART COMPATABILITY**

*Designed for carts with US 2-Bar; ANSI Z245.60-2008, Type B Domestic Carts*

- **MOUNTING VERSATILITY**

*Allows for a range of mounting heights from 38-41" to accommodate a variety of truck chassis heights*

- **BUILT FOR DURABILITY**

*Scoop design features Heavy Duty Steel Construction, Durable Powder Coat Finish and External Up/Down Stops*

- **LOW MAINTENANCE DESIGN**

*Self-lubricating nickel-plated pivots inside bronze bushings with external grease points help to extend life*

- **ROTARY VANE ACTUATOR**

*Forged alloy shaft with durable 2" spline and cast-iron housing offer maximum lifting torque*

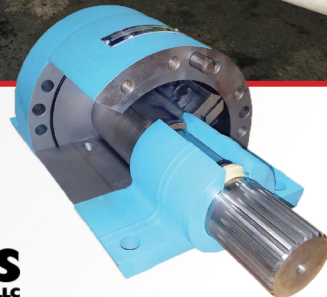
- **MADE IN THE USA**

*Manufactured, assembled and tested in BERNE, INDIANA*



**THE ROTAC SCOOP IS THE ONLY  
CART TIPPER ON THE MARKET TO  
FEATURE THE MICROMATIC ROTAC®  
ROTARY VANE ACTUATOR - ITS  
SIMPLE YET EFFICIENT DESIGN  
FEATURES ONLY **ONE MOVING PART!****

**Holtz Industries, Inc. | 200 S Terrace Ct | Newark, OH 43055 | TF: 1-800-535-0104**



**MICROMATIC ROTAC®  
ROTARY VANE  
ACTUATOR**