

Model H-200 Series

Rated Line Pull 8,000 lbs.

HDG-200/HYDG-200	Gear Ratio 30:1*	Weight:	H-200
		(LBS.)	110
		(KGS)	50

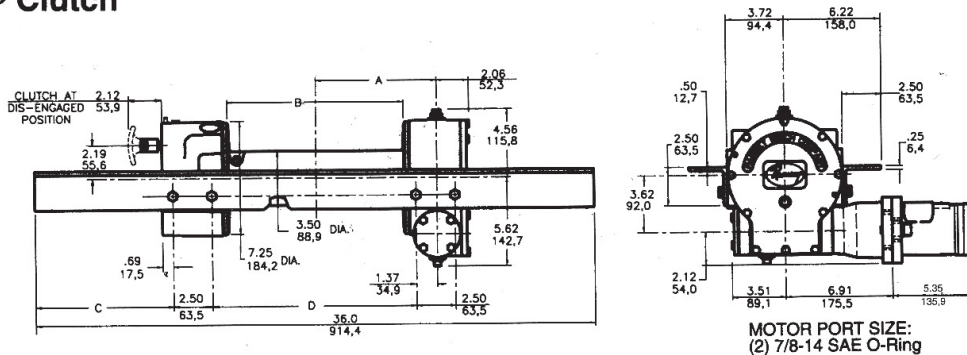
For optional worm brake order with HG prefix. Examples: HG-200, HG-246, HYDG-200. 30: 1 Gear Ratio winches should not be used for hoisting or lifting.

*Rated line pull 4,000 lbs. with worm brake (HDG-200, HYDG-200) add 2¹¹/₃₂"/59.5 MM to dim. 3.51"/89.1 MM. A worm brake is required for load holding applications. For 8,000 lb. duty rating, contact factory.

△Winch only conforms to SAE J706. For SAE qualification of mounting angles, if applicable, consult Ramsey Engineering.

WINCH MODEL	A INCHES MM	B INCHES MM	C INCHES MM	D INCHES MM
H-200	7.78 197.6	11.31 287.3	8.94 227.0	13.12 333.3

RAM-LOK® Clutch



HDG-200/HYDG-200 Performance

4,000 Lb. Duty Rating**
30:1 Gear Ratio

**For 8,000 Lb. Duty Rating, Contact factory

