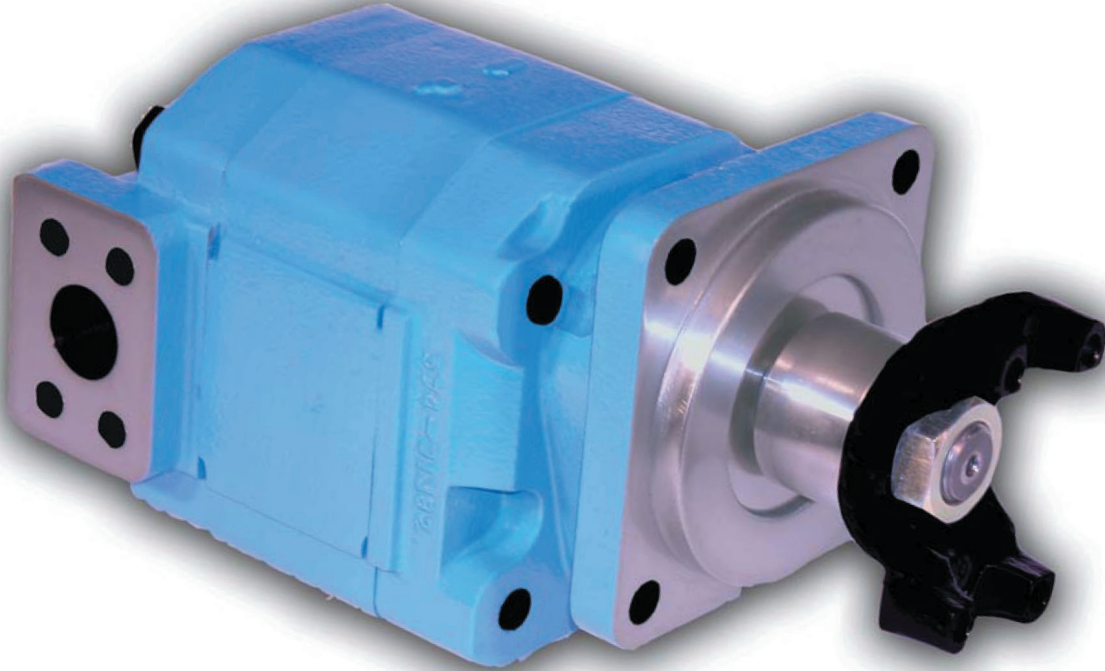


PERMCO

P360

360

FRONT MOUNT TAPERED SHAFT REFUSE SERIES



360 SERIES FEATURES

- Heavy duty sleeve bushing design in a large frame size
- Cubic inch displacement 9.00 available; consult factory for additional sizes
- Working pressure up to 3500 PSI; 3000 PSI for 9.00 cubic inch displacement
- Speeds up to 2400 RPM
- Flows up to 90 GPM
- Doweled and high strength cast iron construction
- 100% factory tested
- High strength alloy steel gear and shaft sets
- 1/4" O-ring test ports, 3/4" O-ring return port in rear of port end cover
- Pressure balanced wear plates maintain high pump efficiency throughout all operating ranges
- Assembled with competitive size end yoke, outboard bearing and excluder seal

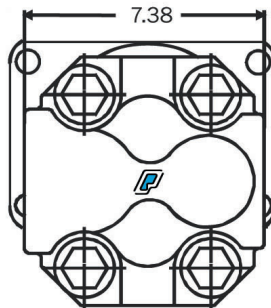
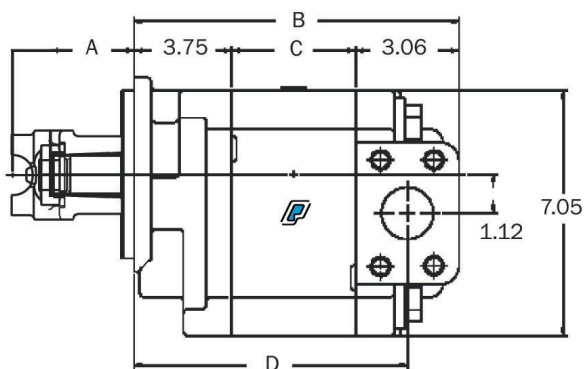


The Sensible Choice

Holtz Industries, Inc. | 200 S. Terrace Ct. | Newark, OH 43055

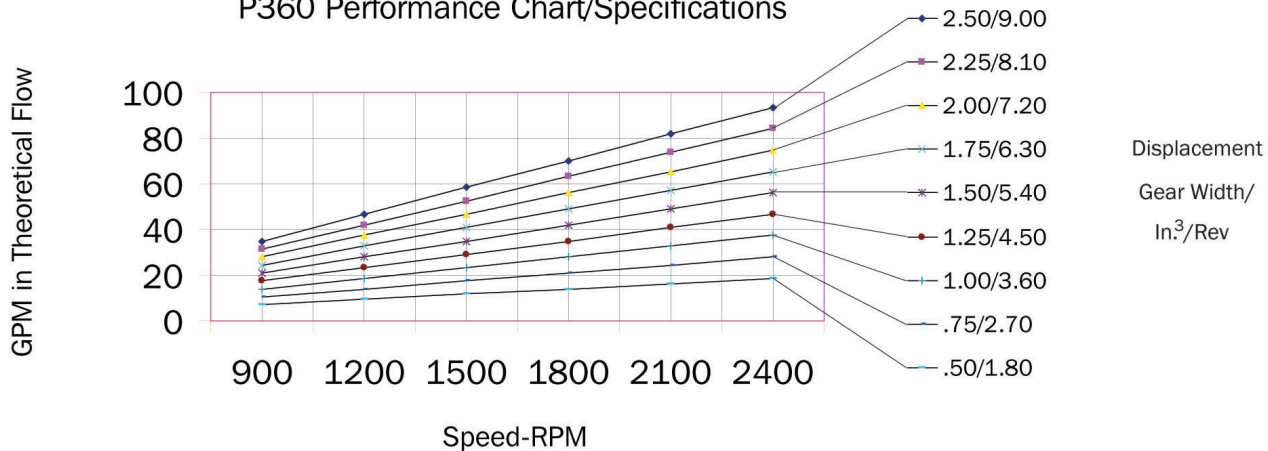
Toll Free: 1-800-535-0104 | Fax: 740-366-0771

Dimensional Data (inches)



- A. 3.70" Tapered shaft shown, other shafts available
- B. 7.31" plus gear width
- C. 0.50" plus gear width
- D. 5.79" plus gear width

P360 Performance Chart/Specifications



GEAR WIDTH (IN)	DISPL CU IN/CC	MAX RPM	MIN RPM	MAX PSI/BAR
0.50	1.80/30	2400	600	3500/241
0.75	2.70/44	2400	600	3500/241
1.00	3.60/59	2400	600	3500/241
1.25	4.50/74	2400	600	3500/241
1.50	5.40/89	2400	600	3500/241
1.75	6.30/103	2400	600	3500/241
2.00	7.20/118	2400	600	3500/241
2.25	8.10/133	2400	600	3250/224
2.50	9.00/148	2400	600	3000/207