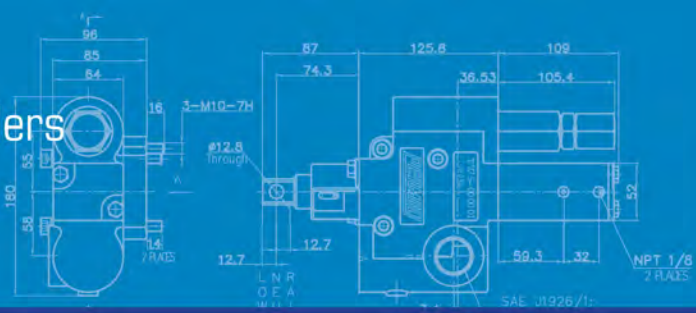


Heavy & Medium Duty Dump Trucks & Trailers

# LIL TIPPER II

ORB



Precision-Engineered Fluid Power Products

The Sensible Choice for Pumps



Dump Trucks  
Walking Floor



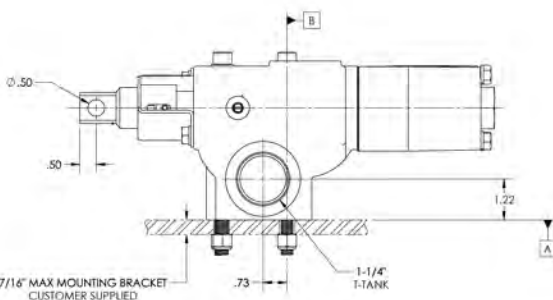
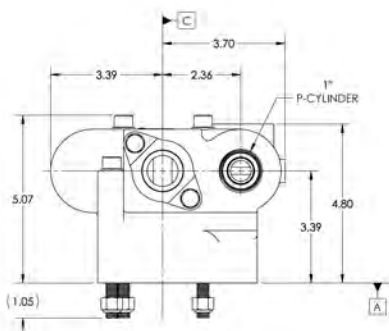
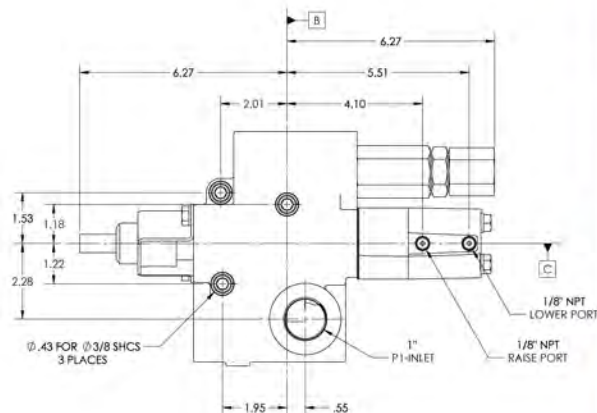
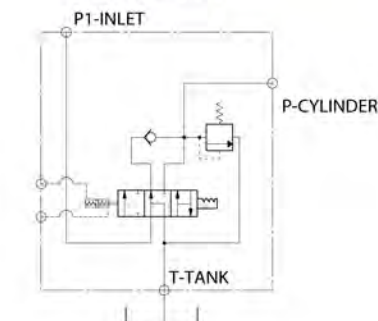
## Features

- Pump and cylinder protected in the "Raise" and "Neutral" position of the spool
- Manual shift, factory installed "OE" air, or "Add-on" air shifts each with full metering capabilities
- Gemini/ Dual Pressure relief valve available
- Pressures up to 3200 psi and flows up to 46 GPM
- Built-in load check maintains dump body angle and is installed in the cylinder port for superior self-cleaning
- Built-in direct acting relief valve set at factory
- Neutral lock-out safety cap for use with pull-out cable
- Valve is remotely mounted when space around PTO is limited
- Dedicated return line protects the pump from excessive heat
- 100% factory tested
- SAE and NPT ports available



## Dimensional Data (inches)

### AIR SHIFT



<b>P</b>	Outlet (to cylinder)
<b>P1</b>	Inlet (from pump)
<b>T</b>	Tank Line (Return to Tank)



Permco is a leading manufacturer of high-pressure hydraulic gear/vane pumps and motors, flow dividers, intensifiers, and accessories. Available in a wide variety of sizes and configurations to suit your application needs.

## Lil Tipper Code

Tipping Valve

**NPT** - Ports

**ORB** - Ports

**A** Air Shift

**M** Manual Shift

**TV2 - ORB - A - 1 - \*\***

### Pressure Setting

**20** 2000 psi

**25** 2500 psi

**30** 3000 psi

**Blank** Gemini

**1** RP-5514

**X** RP-5514-3000

**25/32** Gemini/Dual Pressure\*

\*Customer must provide both lower and higher pressure relief settings.